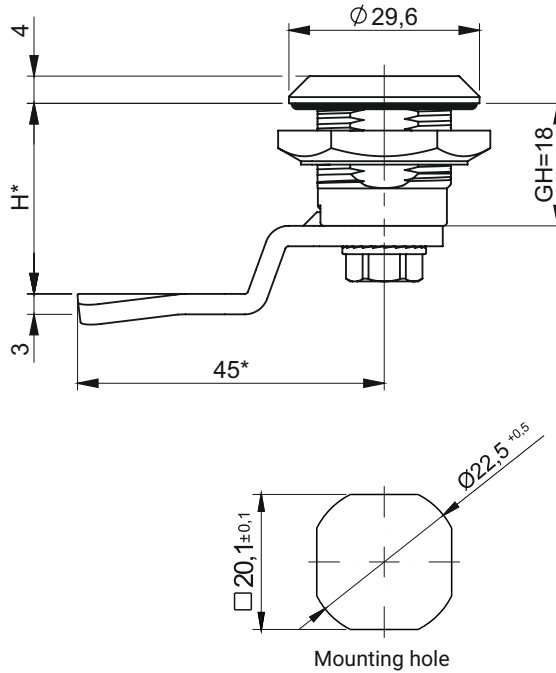


IP65

IP66\*\*



M22-7 - Lock type with PUR-type foam gasket

TYPE OF BODY [K]	
Polyamide	
RAL 9005	RAL 7035
07	08

MATERIAL AND FINISHING OF THE INSERT [C]					
Polyamide			ZAMAK 5		
RAL 9005	RAL 7035	Chrome	Nickel	RAL 9005	RAL 7035
07	08	01	02	04	05

Type of the material of the insert	INSERTS AVAILABLE												
	D3	D5	T8	T9	KW 8	C9	S	HEX8	HEX10	M11	M12	M2	M3
Polyamide	●	●	●	-	●	-	●	-	-	***	***	***	***
ZAMAK 5	●	●	●	●	●	●	●	●	●	***	***	***	***

THE TYPE OF THE NUT [N]			
	ZAMAK 5	Polyamide	Steel
Nut without grounding	11	12	13

- \* Can be ordered in other sizes
- \*\* Lock for special request
- \*\*\* Precise description of inserts M1, M2, M3, check pg. 2A-10

**How to order:**



where C,N, G stand for:

- C - type of the material and finishing of the surface
- N - type of nut
- H.G - the cam unbending dimension to be chosen from pages 1C-9 to 1C-22

**Notice:**

Lock M22-6 is compatible with all cams from range : 11, 12, 13, 14, 18, 31, 32, 33, 34, 38, JZ-002, JK-1610